



GE INDUSTRIAL MOTORS
a **WOLONG** company

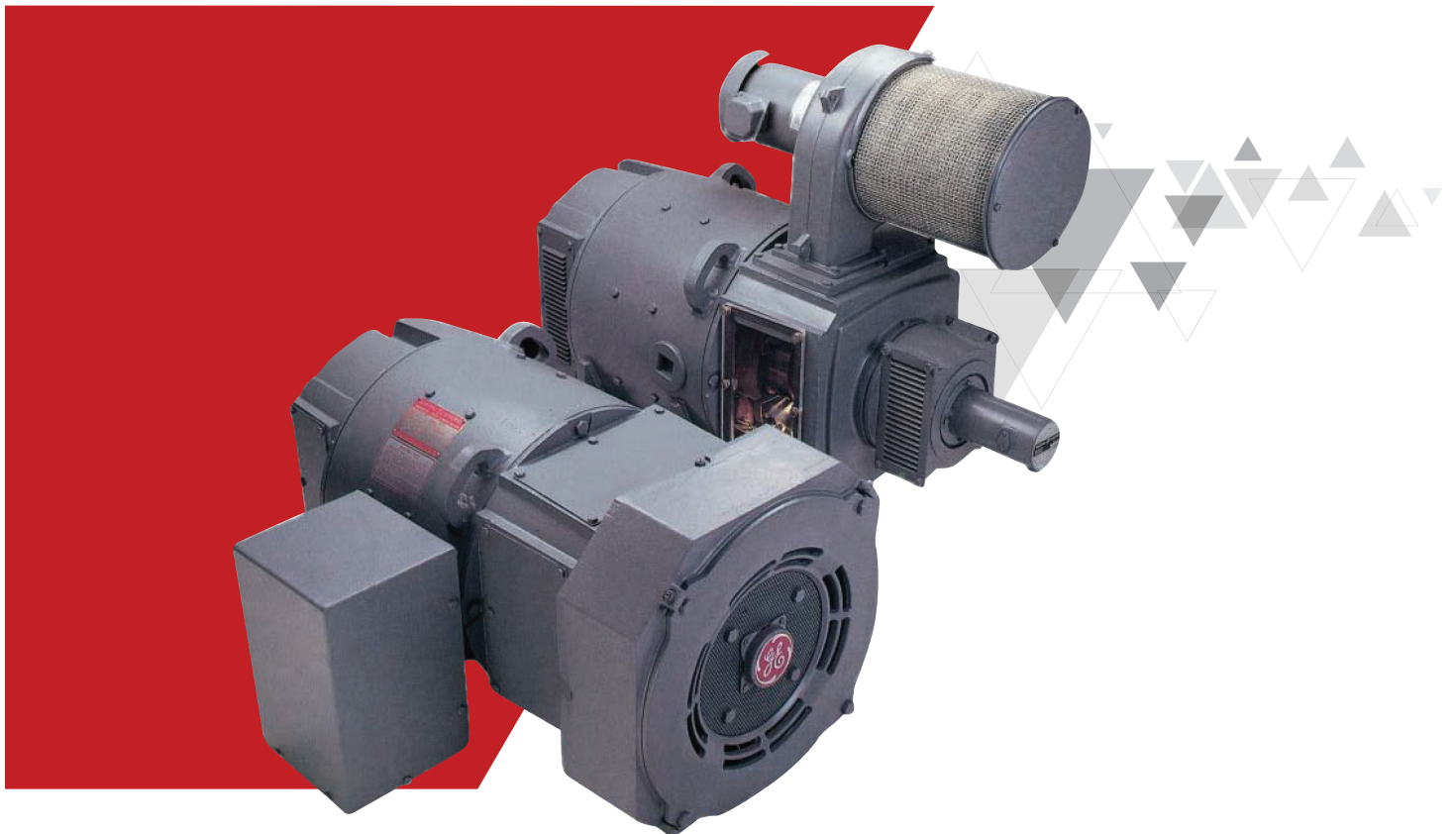
Kinamatic DC Motor

Direct Current Motors

NEMA Premium Efficient

Volts: 230/460, 460, 575

Hp: 1 to 250



NEMA
Premium

VFD
READY
NEMA
MG1
PART 31

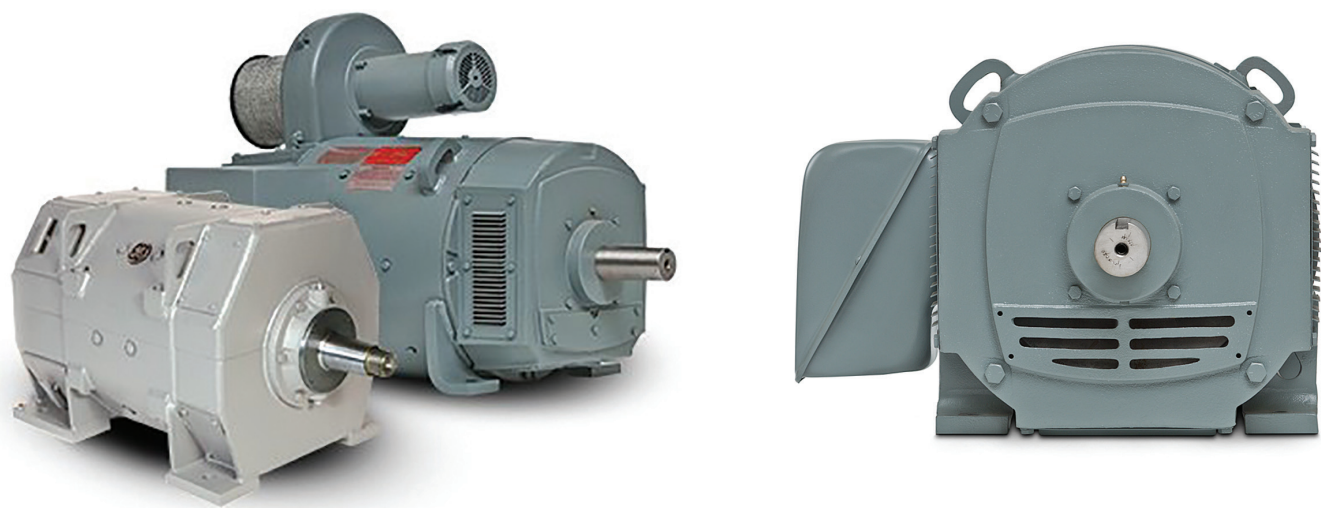
CSA
C US

+1 (888) 525-2915
www.gemotorswolong.com

GE Industrial Motors Value

Excellence best defines the approach General Electric uses to engineer and manufacture Kinematic™ motors. GE Industrial Motors has over 100 years of DC motor experience utilizing superior design and quality control systems. As a leading motor provider, we offer comprehensive solutions supporting a large installed base of DC industrial motors. Our motors are a reliable lifeline to driven equipment and are the backbone of our customers' production and operation. GE is a respected name in the industry and is positioned to help you select the right motor to meet your applications.

Market Served	Applications
Steel	Metal rolling mill, coiler drive, winders
Paper	Wet end calendar, tension reel, drier, winder
Textiles	Weaving machinery
Plastics	Extrusion
Mining	Underground locomotive, conveyors, elevators
Material Handling	Conveyors, cranes, elevators
Recreation	Ski lift, shuttle, amusement park
Machine Tool	Metal lathe, veneer lathe, mills, saws
Power Generation	Emergency lube oil, sludge
Transit	Cooling fan, compressor
General Purpose	Miscellaneous industrial



Standard Product Offerings

Feature	Specification
HP Range	1-500
Base Speed	300-3500 RPM
Armature Voltage	180, 240, 500
Field Voltage	300/150, 240/120
Accessory Mounting	CD182AT - CD5010AY commutator end 8.5" mounting rabbet
Agency Approvals	CSA
Altitude	3300 ft
Ambient	40°C
Balance/Vibration	Base speed 1750 RPM: .0015 peak-to-peak amplitude (inches)
Bearing Caps	CD258AT - CD5010AY both drive end and commutator end
Bearing Type	Ball, CD182AT - CD2010AT double shielded; CD258AT - CD5010AY open
Coils	CD180AT - CD329AT random wound - dip and baked CD360AT - CD5010AY TREC® coils
Conduit Box	Fabricated steel, 360 degree rotatable, gasketed
Current Overload	Occasionally repeated loads of 150% of base speed full load current
Drain	(1) Drive end and commutator end (n/a on CD180AT frame)
Endbells	CD182AT - CD500AT cast iron; CD5010AY ductile iron
Frame Material	Rollled steel
Frame Size	CD182AT - CD5010AY
Grease	Alvania #2® lithium soap based
Grease Fittings	Alemite
Ground	Bronze bolt in conduit box
Insulation Class	Class F
Insulation System	Armature treatment - RHP (Radiant Heat Process)
Lifting Means	CD180AT (2) cast lifting lugs in endsheilds; CD210AT - CD5010AY (2) welded lifting lugs
Mounting	F1, modifiable to F2
Nameplate	Stainless steel
Paint	ANSI #49 grey, heavy duty acrylic enamel
Relubrication	CD182AT - CD2110AT prelubricated and shielded bearings; CD258AT - CD5010AY regreasable
Service Factor	1.0 SF
Temperature Rise	Class F
Tests	Routine Test - report available upon request and purchase order
Warranty	24 months from date of installation or 28 months from date of manufacture, whichever occurs first

Optional Features

- Blower ventilation
- Tachometer/Encoder
- C-face mounting
- Special shaft machining
- Space heater
- Waterproof conduit box
- Transparent cover
- Brake
- Speed limit switch
- Thermostats



Quality, Reliability, Serviceability

All Kinamatic™ motors come with a 2-year warranty

NEMA Enclosures

- Drip-Proof, Totally Enclosed, Explosion-Proof
- All enclosures are customizable to fit specific application requirements

Frames

- Round steel frames
- Bored to provide precise seating of main and commutating poles
- Precision rabbets for mounting of bearing brackets

Brush Rigging

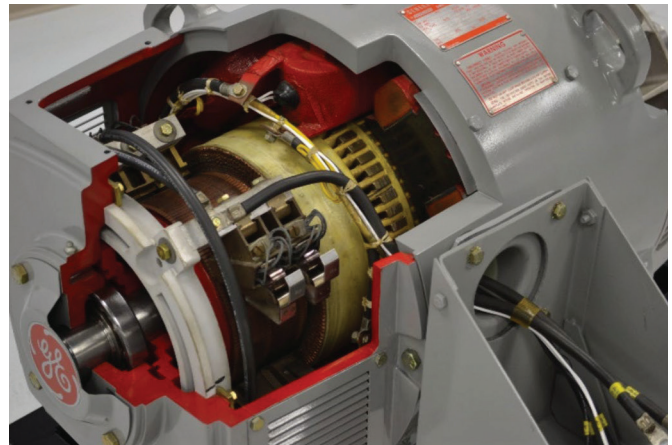
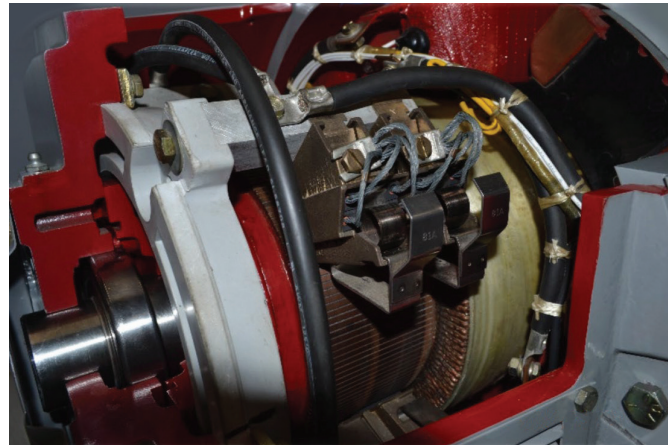
- Field proven design that requires no adjustment
- Heavy cast brush holders with quick release brush springs provide for easy maintenance
- Constant pressure springs stabilize brush contact to ensure proper commutation and improve brush wear

Armature

- Radiant Heat Process (RHP) on CD180 - 500AT frames
- Dip and bake process cures the varnish, preventing voids and protecting against moisture and contaminants
- Controlled glass banding stabilizes armature to withstand frequent starts, stops, and reversals
- Commutator risers TIG welded to armature coils
 - Eliminates hazards of tin or lead contaminants

Bearings

- Double shielded bearings on frames CD180AT - CD2110AT
- Open ball bearings on frames CD258AT - CD5010AY
- Regreasable features with easy access alemite fittings extend bearing life



Quality, Reliability, Serviceability

Designed to facilitate easier and safer routine maintenance

Conduit Box

- Easily accessible
- Oversized fabricated steel box
- Rubber gasketed mounting and clam shell
- Bronze grounding lug
- Rotatable 360° and F2 mounting capabilities make field adaptation easy in any application

Accessory Mounting Face

- Round steel frames
- Bored to provide precise seating of main and commutating poles
- Precision rabbets for mounting of bearing brackets
- Lifting lugs Welded into frame on CD210AT - 5010AY frames
- Cast in endbell on CD180AT frame
- Safer lifting system versus a single eyebolt

Insulation

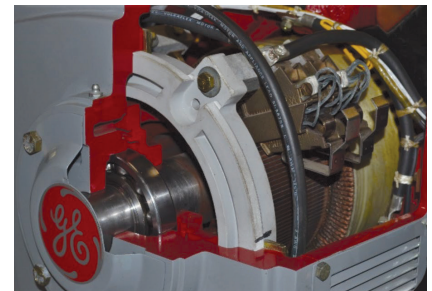
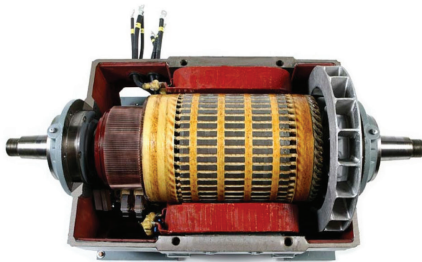
- Class F system with Class H components
- Withstands effects of mechanical shock, vibration, and contamination
- Long life at rated loads

Coils

- Random Wound Coils
 - Frames CD180AT - CD329AT
 - Wrapped with Mylar composite and fiberglass tapes
 - Dip and bake process allows varnish to penetrate the windings
- TREC® (Tape Reinforced Encapsulated Construction) Coils
 - Frames CD360AT - CD5010AY
 - Tightly seals coil to the pole, resisting outside contamination, vibration, impact and wear
 - Excellent heat transfer extends motor life
 - Engineered to withstand thermal expansion and contraction

Replacement Parts

GE offers renewal parts for your DC Kinamatic™ motor to maintain its top performance. With our 2 year warranty and large network of GE authorized service centers worldwide, you will be and running quickly.



Access has never been easier!

search
Google
Type keyword
"gemotorswolong"

ONLINE STORE

view product offerings,
ratings and find a local
distributor

START HERE

Motor Catalog

View updated information about standard motors on your mobile device. It can also be viewed offline and printed.

E-Commerce

Find a distributor. Download datapacks. Access support library.

Follow us
on LinkedIn

Our News

Headlines

News

The latest developments, new product introductions and special industry events.



GE INDUSTRIAL MOTORS
a **WOLONG** company



www.gemotorswolong.com

Kinematic is a trademark of Wolong Electric America LLC.

NEMA Premium is a trademark of NEMA.

GE is a trademark of General Electric Company. Manufactured under trademark license.

©2020, Wolong Electric America LLC. All rights reserved

GEA18864 (4/2020)