

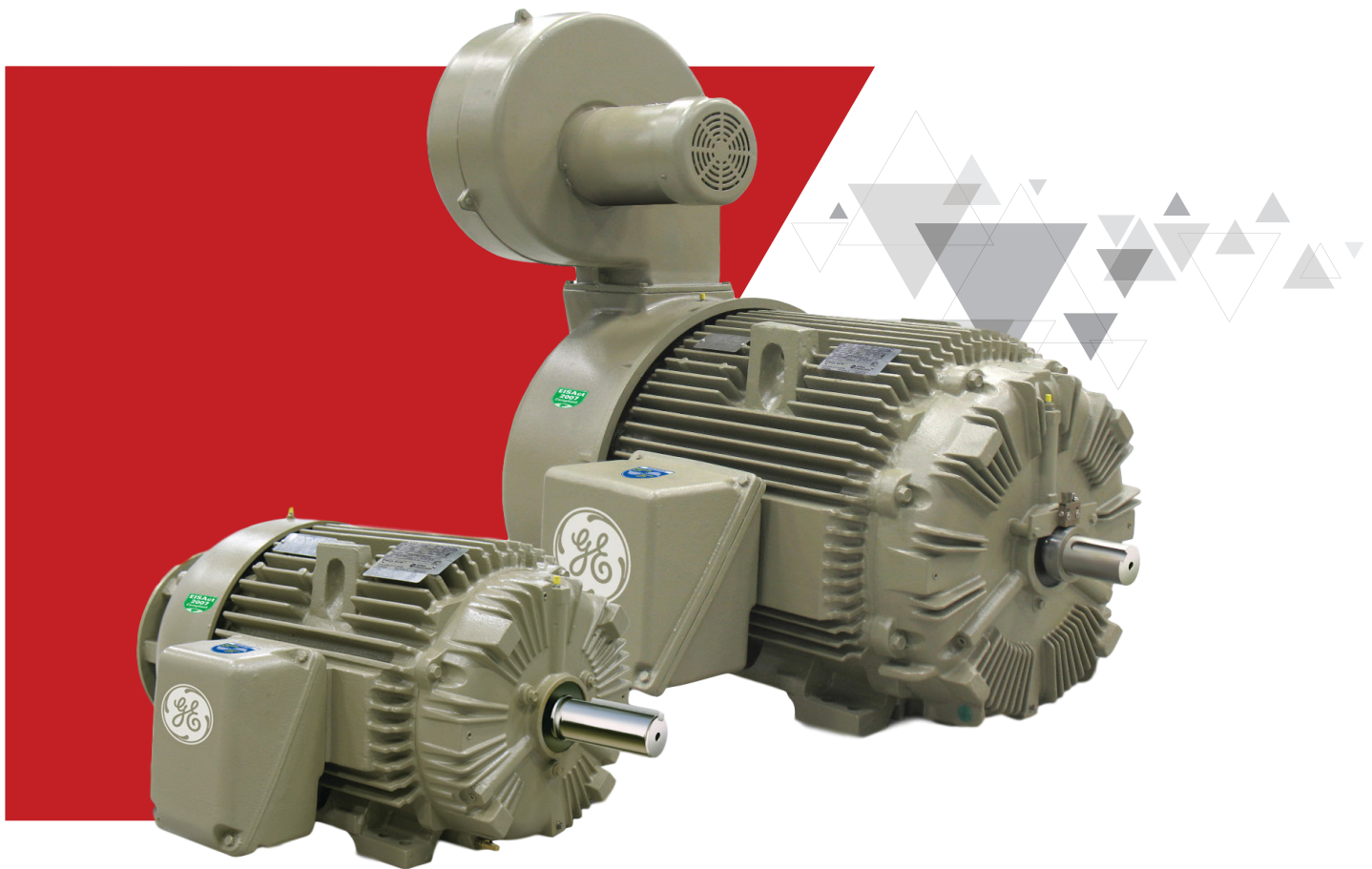


GE INDUSTRIAL MOTORS  
a WOLONG company

# ASD Ultra<sup>®</sup> Extra Severe Duty Motors

LV Induction Motor

Extra Severe Duty Constant Torque  
Variable Speed Drive Applications



+1 (888) 525-2915  
[www.gemotorswolong.com](http://www.gemotorswolong.com)

# All constant torque motors are not built the same.

## Standard Rating

1.5 - 300HP  
1200 and 1800RPM  
230/460V or 460V  
TEFC, TENV, TEBC

## Reliability is built in.

Designed for longer life in tough industrial applications.

- Can handle scalar or vector drives.
- Infinite:1 constant torque from zero to base speed.
- NEMA Premium efficiency at 60Hz.
- 2 N/C thermostat on 143-286 frame
- 3 N/C thermostat on 324-449 frame
- Class F rise (105°C max) TEFC/TENV
- Class B rise (80°C max) TEBC

## Key Features

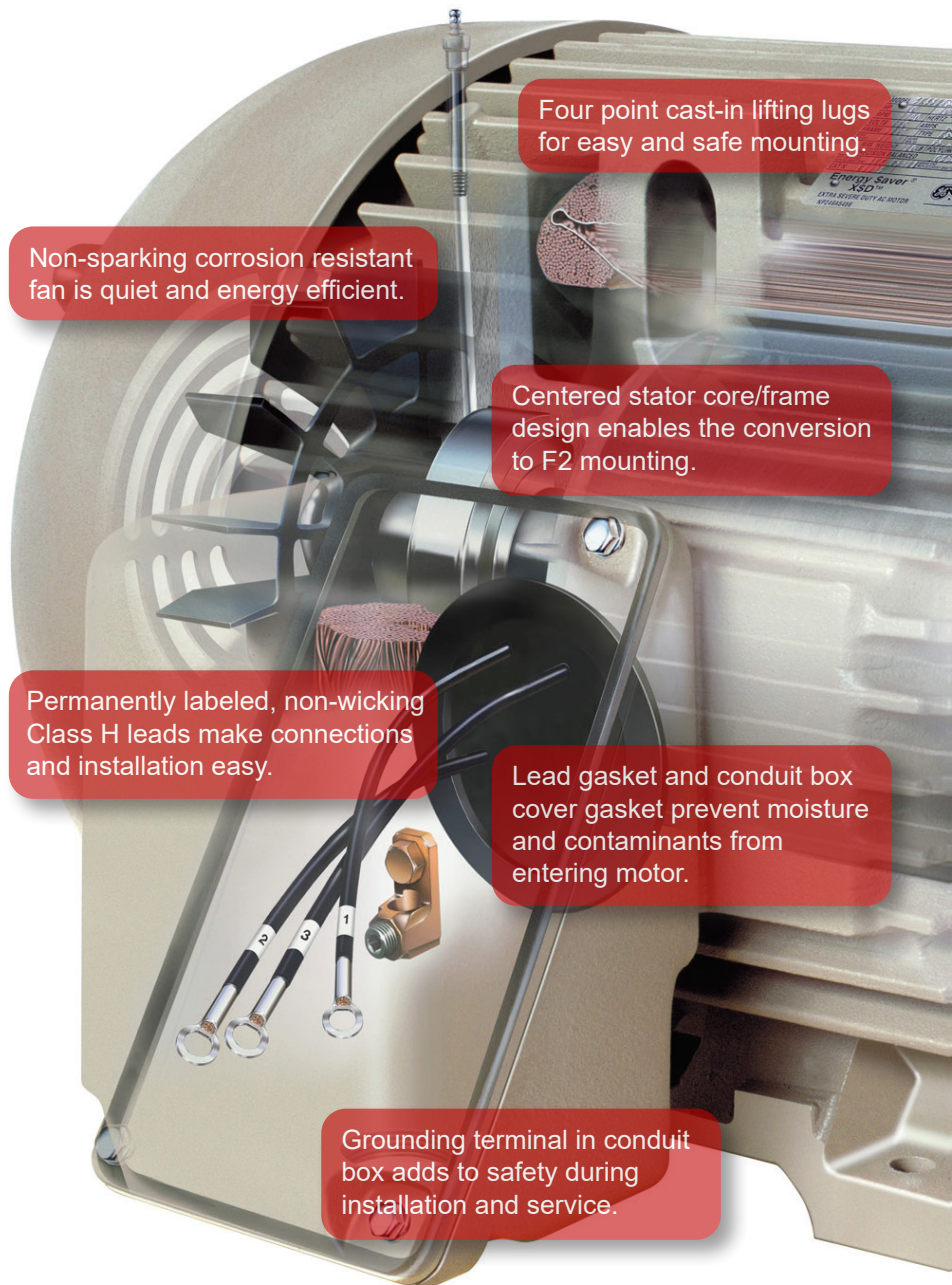
Comprehensive five year warranty (60/66 months) is standard. Extended AEGIS™ SGR bearing guarantee on motors up to and including 100HP: 15 yrs or 130k hrs direct drive; 10yrs or 80k hrs belted drive.

ISO 1940 Grade 1.0 Precision Plus balance to 0.04 in/sec results in smooth, reliable operation and long bearing life.

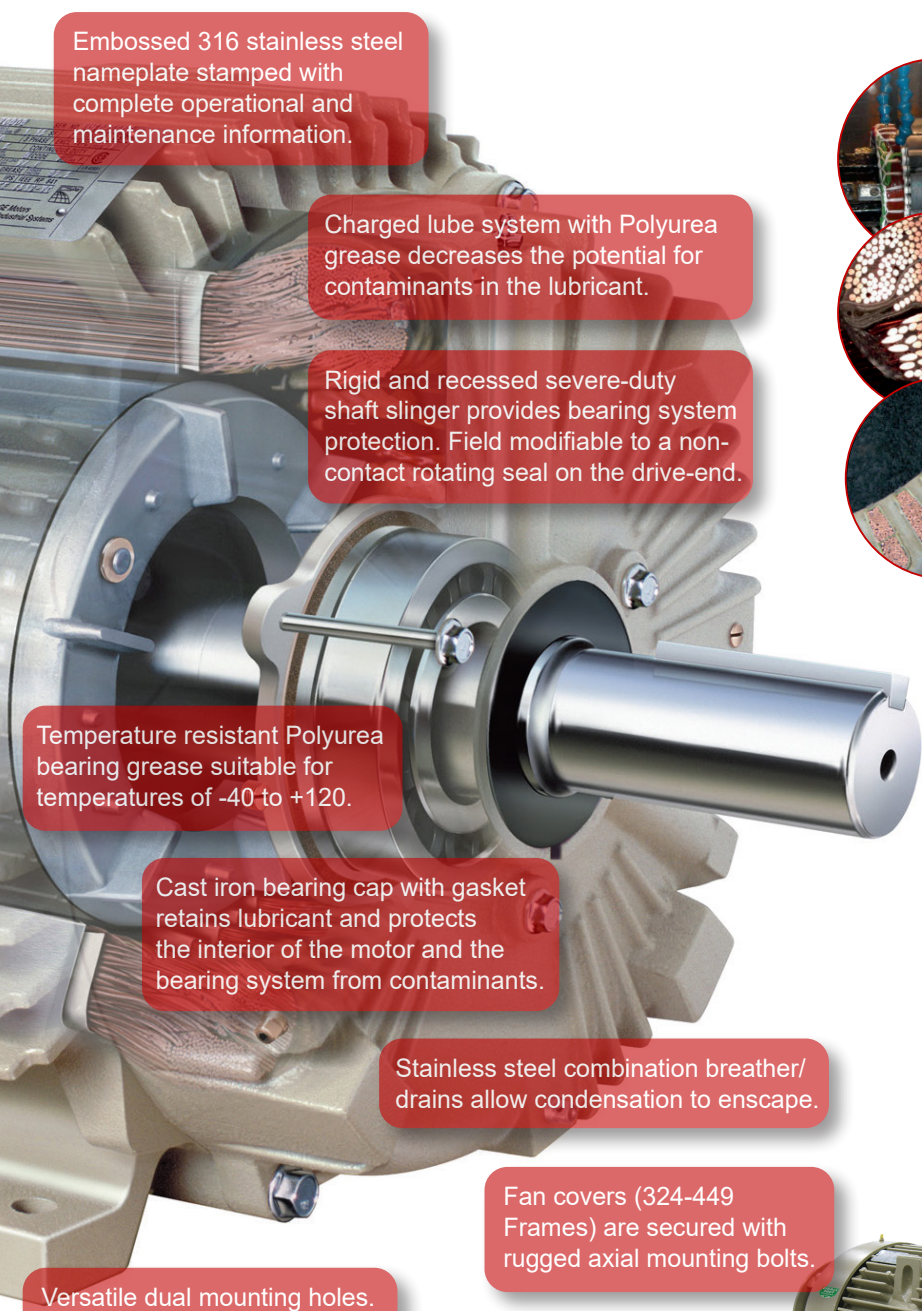
Built for a long 130,000 hour L10 direct connected and 50,000 hour L10a belted bearing life without life adjusting factors.

Complete Test per MG1 Part 12 IEEE Standard 112 and Corona Inception Voltage (CIV). Verification of compliance and routine test report supplied with every ASD Ultra motor.

ASD Ultra motors can be UL listed, CSA listed, or GE self certified for Division 2 locations or modified to meet ATEX Zone 2 or CE requirements.







Embossed 316 stainless steel nameplate stamped with complete operational and maintenance information.

Charged lube system with Polyurea grease decreases the potential for contaminants in the lubricant.

Rigid and recessed severe-duty shaft slinger provides bearing system protection. Field modifiable to a non-contact rotating seal on the drive-end.

Temperature resistant Polyurea bearing grease suitable for temperatures of -40 to +120.

Cast iron bearing cap with gasket retains lubricant and protects the interior of the motor and the bearing system from contaminants.

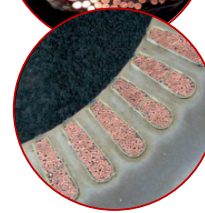
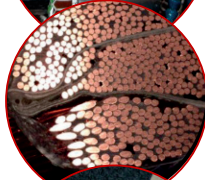
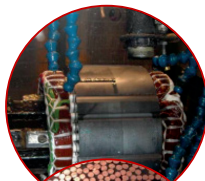
Stainless steel combination breather/drain allows condensation to escape.

Fan covers (324-449 Frames) are secured with rugged axial mounting bolts.

Versatile dual mounting holes.

Rugged cast iron frame, conduit box and fan cover.

Oversized gasketed conduit box helps to keep moisture out.

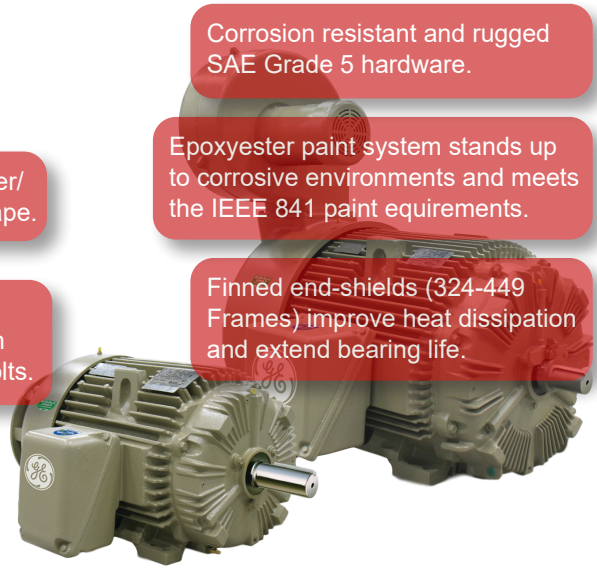


**GEGARD™ Insulation**  
**offers added protection**  
Our Class H GEGARD insulation system is designed to excel in variable frequency drive applications exceeding NEMA MG1-31 standards.

**Rotational Varnish Application**  
Even resin coverage.  
Less gaps (helps prevent corona inception damages)

**Strong Bond**  
Wire bonding guards against end-turn vibration.

**High Protection**  
Contaminants can't penetrate tightly bonded windings and slots.



Corrosion resistant and rugged SAE Grade 5 hardware.

Epoxyester paint system stands up to corrosive environments and meets the IEEE 841 paint requirements.

Finned end-shields (324-449 Frames) improve heat dissipation and extend bearing life.

Five point cast-in vibration probe mounting locations (four radial and one axial).

# Access has never been easier!

search  
**Google**  
Type keyword  
"gemotorswolong"

## ONLINE STORE

View product offerings,  
ratings and find a local distributor.

START HERE

## Motor Catalog

View updated information about standard motors on your mobile device. It can also be viewed offline and printed.

## E-Commerce

Find a distributor.  
Download datapacks.  
Access support library.

Follow us  
on LinkedIn

## News

The latest developments,  
new product introductions  
and special industry events.



**GE INDUSTRIAL MOTORS**  
a **WOLONG** company



**www.gemotorswolong.com**

ASD Ultra®, trademark of Wolong Electric America LLC.

NEMA Premium is a trademark of NEMA.

GE is a trademark of General Electric Company. Manufactured under trademark license.

©2020, Wolong Electric America LLC. All rights reserved

GEIMASD (6/2020)